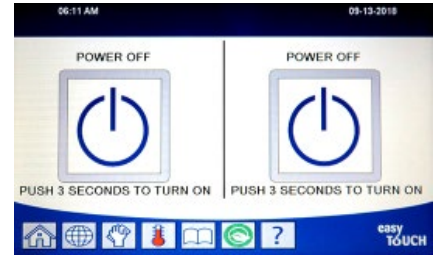


FQ4000 FS Basic Operation



Turn Fryer ON or OFF

Press and hold button to switch on. Press button to switch off. Select button on desired side of a split vat.



Changing a Product

Press the product ICON associated with the lane to change the product. Then press the new product icon.

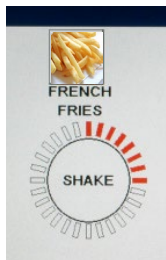


Start a Cook Cycle

Press the START button under the desired product.

Cancel a Cook Cycle

Press the RED "X" button next to the desired product within the first 30 seconds of a cook.



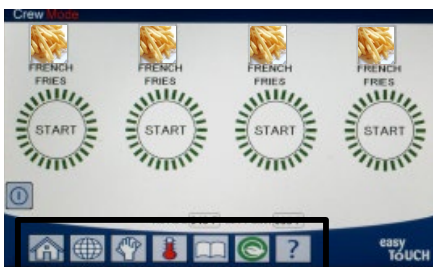
Cancel Shake Alarm

Press button under active display.



Cancel an end of Cook (REMOVE) Alarm

Press button under active display.



Check Temperature and Setpoint

Press temperature button. Displays actual temperature and setpoint.



Home Button
(Settings, Recipes)

Change Language Filter Menu Temp Menu Energy Saver Information Statistics



Frymaster

Cooking with the FQ4000 FS

- 1** A product is shown in display. To choose a different product press product icon and choose another product.

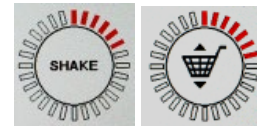


- 2** Press the START button under the product to begin the cook cycle.

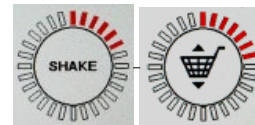
- 3** Display changes to COOKING with remaining cook time.



- 4** SHAKE alternating with basket is displayed when it is time to shake the fry basket.



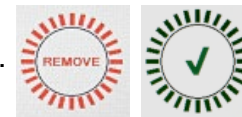
- 5** Press SHAKE/BASKET button to cancel SHAKE alarm.



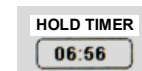
- 6** REMOVE alternating with the CHECKMARK is displayed when the cook cycle is complete.



- 7** Press the REMOVE/CHECKMARK button to cancel alarm.



- 8** HOLD TIMER is displayed below the START button as the hold timer counts down.



- 9** Pressing the START button now will launch a cook cycle and end the hold countdown timer.



- 10** HOLD EXPIRED alternating with the CHECKMARK is displayed when the hold time has elapsed and expired.



- 11** Pressing the HOLD EXPIRED/CHECKMARK button restores the display to the current selected product and the unit is ready for cooking.

